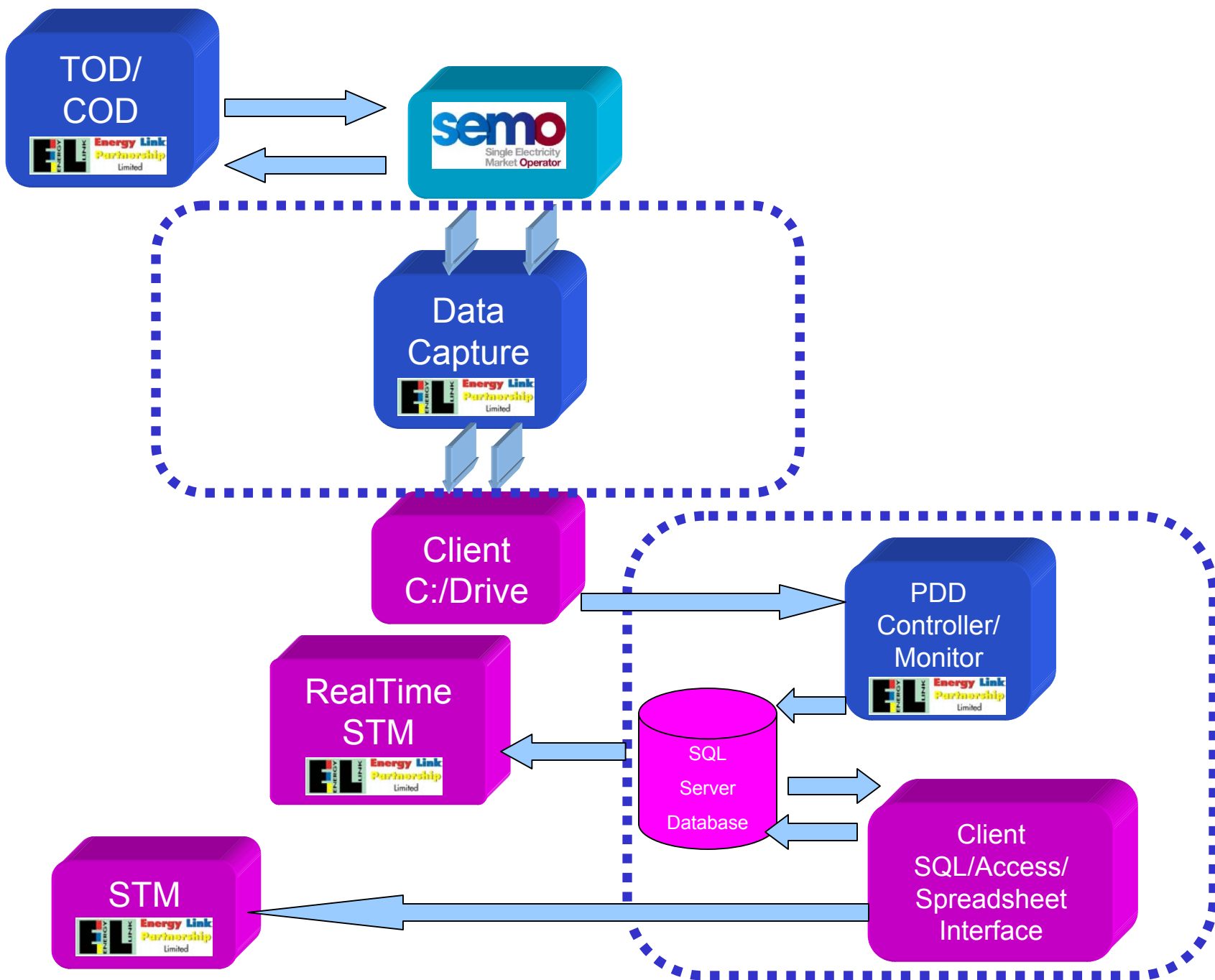


# SEM Data Capture and Storage

Energy-Link Applications



# SEM Data Capture



An Energy-Link Application

T3 Reports

Version 1.0.0.21  
Microsoft Windows XP Professional

Copyright ©

2007 - 2008

# Participant Data - T3

File View Help

Report Type : Market Sub Type : Day Ahead Period : Daily Access Class : Not Applicable 08/01/2008 Submit Request

Request Results

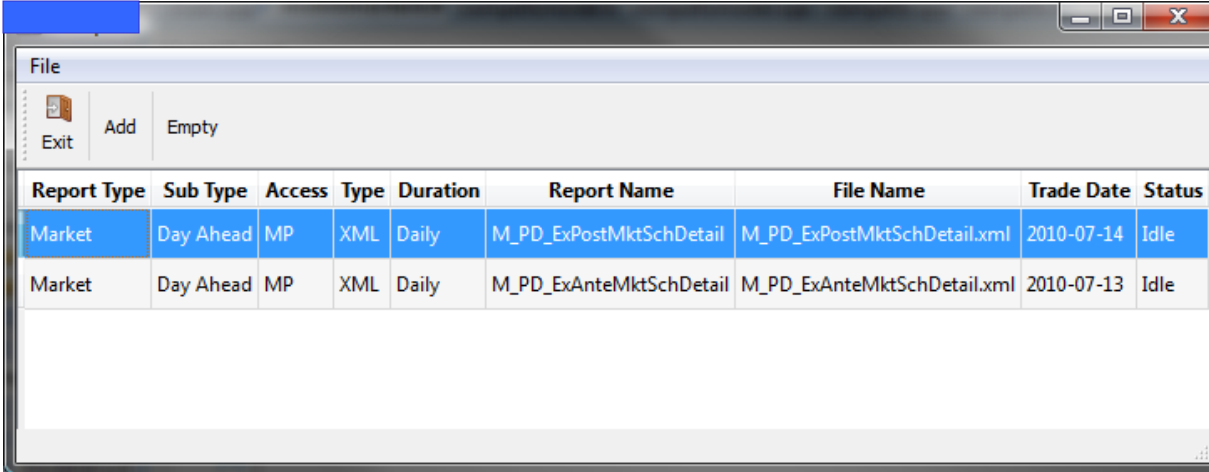
Report Name	Description	Expires	Format	Binary?	Size
MP_D_ExAnteMktSchDetail	Daily Ex-Ante Market Schedule Detail (D-1) (MP)	2008-04-07	HTML	false	18395
MP_D_ExAnteMktSchDetail	Daily Ex-Ante Market Schedule Detail (D-1) (MP)	2008-04-07	XML	false	40295
MP_D_ExPostMktSchDetail	Daily Indicative Ex-Post Market Schedule Detail (D+1) (MP)	2008-04-07	HTML	false	27060
MP_D_ExPostMktSchDetail	Daily Indicative Ex-Post Market Schedule Detail (D+1) (MP)	2008-04-07	XML	false	66492
MP_D_IndicativeActualSch...	Daily Indicative Actual Schedules (MP)	2008-04-07	HTML	false	10086
MP_D_IndicativeActualSch...	Daily Indicative Actual Schedules (MP)	2008-04-07	XML	false	22529
MP_D_InitialExPostMktSch...	Daily Initial Ex-Post Market Schedule Details (D+4) (MP)	2008-04-07	HTML	false	27064
MP_D_InitialExPostMktSch...	Daily Initial Ex-Post Market Schedule Details (D+4) (MP)	2008-04-07	XML	false	68049
PUB_D_ActualLoadSummary	Daily Actual Load Summary (PUBLIC)	2008-04-07	HTML	false	14608
PUB_D_ActualLoadSummary	Daily Actual Load Summary (PUBLIC)	2008-04-07	XML	false	33715
PUB_D_CODInterconnecto...	Daily Commercial Offer Data - Interconnector Units (PUBLIC)	2008-04-07	HTML	false	124375
PUB_D_CODInterconnecto...	Daily Commercial Offer Data - Interconnector Units (PUBLIC)	2008-04-07	XML	false	345282
PUB_D_CODStandardDem...	Daily Commercial Offer Data - Standard Demand Side Units (PUBLIC)	2008-04-07	HTML	false	1946
PUB_D_CODStandardDem...	Daily Commercial Offer Data - Standard Demand Side Units (PUBLIC)	2008-04-07	XML	false	2984
PUB_D_CODStandardGen...	Daily Commercial Offer Data - Standard Generator Units (PUBLIC)	2008-04-07	HTML	false	38111
PUB_D_CODStandardGen...	Daily Commercial Offer Data - Standard Generator Units (PUBLIC)	2008-04-07	XML	false	103138
PUB_D_CommercialOfferDa...	Daily Commercial Data Demand Side Unit Nomination Profiles (PUBLIC)	2008-04-07	HTML	false	9145
PUB_D_CommercialOfferDa...	Daily Commercial Data Demand Side Unit Nomination Profiles (PUBLIC)	2008-04-07	XML	false	24310
PUB_D_CommercialOfferDa...	Daily Commercial Data Generator Unit Nomination Profiles (PUBLIC)	2008-04-07	HTML	false	600165
PUB_D_CommercialOfferDa...	Daily Commercial Data Generator Unit Nomination Profiles (PUBLIC)	2008-04-07	XML	false	1672865

Market Operator Messages

Element	Information
Report Request	Successfully processed: action=DOWNLOAD and request_type=LIST_REPORTS.
Report Request	Number of files which matched the request: 56.

Copyright © 2007 Energy Link Partnership Ltd.

# Participant Data - T3



Report Type	Sub Type	Access	Type	Duration	Report Name	File Name	Trade Date	Status
Market	Day Ahead	MP	XML	Daily	M_PD_ExPostMktSchDetail	M_PD_ExPostMktSchDetail.xml	2010-07-14	Idle
Market	Day Ahead	MP	XML	Daily	M_PD_ExAnteMktSchDetail	M_PD_ExAnteMktSchDetail.xml	2010-07-13	Idle

# Public Data

**AIME Site Scraper - 1.0.1.14**

File XML Publications Help

Daily Publications

Daily Publications

ID	Publication	Report Date	Trade Date	Nodes	Size	State
1	Dispatch Instructions	13/05/2009 14:27:55	12/05/2009	295	169,416	HTTP
2	Modified Interconnector Unit Nominations	13/05/2009 15:16:16	12/05/2009	288	108,430	HTTP
3	Price-Affecting Metered Data	12/05/2009 15:14:40	11/05/2009	2,700	1,364,691	HTTP
4	SO Interconnector Trades	12/05/2009 15:13:25	11/05/2009	48	27,351	HTTP
5	Interconnector Capacity Active Holdings	12/05/2009 15:13:25	11/05/2009	192	94,848	HTTP
6	Ex-Post Indicative SMPs	12/05/2009 15:12:45	11/05/2009	96	28,540	HTTP
7	Ex-Ante Indicative Operations Schedule	12/05/2009 16:00:20	11/05/2009	5,664	2,567,390	HTTP
8	Generator Unit Technical Characteristics Data Transaction	12/05/2009 16:13:34	11/05/2009	266	151,471	HTTP
9	Energy Limited Generator Unit	12/05/2009 16:13:34	11/05/2009	15	5,523	HTTP
10	Ex-Post Initial Market Schedule Quantity	12/05/2009 16:13:06	08/05/2009	6,000	3,651,023	HTTP
11	Initial SMPs	12/05/2009 16:13:05	08/05/2009	96	28,534	No Files
12	Ex-Post Indicative Market Schedule Quantity	12/05/2009 15:12:45	11/05/2009	6,000	3,651,019	No Files
13	Interconnector Available Transfer Capacities	12/05/2009 14:45:50	11/05/2009	48	19,518	No Files
14	Commercial Offer Data - Standard Generator Unit	12/05/2009 14:00:12	11/05/2009	74	106,095	No Files
15	Technical Offer Data - Standard Units	12/05/2009 17:05:05	09/05/2009	74	414,359	No Files
16	Technical Offer Data - Forecast Data	12/05/2009 14:00:09	11/05/2009	3,600	2,168,847	No Files
17	Commercial Offer Data - Interconnector Units	12/05/2009 14:00:12	11/05/2009	240	287,175	No Files
18	Commercial Offer Data - Generator Unit Nomination Profiles	12/05/2009 14:00:09	11/05/2009	3,552	1,719,008	No Files
19	Commercial Offer Data - Demand Side Unit Nomination Profiles	12/05/2009 14:00:11	11/05/2009	48	24,313	No Files
20	Technical Offer Data - Demand Side Units	12/05/2009 14:00:10	11/05/2009	1	1,925	No Files
21	Commercial Offer Data - Standard Demand Site Unit	12/05/2009 14:00:12	11/05/2009	1	2,987	No Files
22	Demand Control Data Transaction	12/05/2009 14:00:10	11/05/2009		1,142	No Files
23	Ex-Ante Indicative Market Schedule	12/05/2009 12:39:54	11/05/2009	5,760	2,254,979	No Files
24	Ex-Ante Market Schedule Summary	12/05/2009 12:40:20	13/05/2009	96	33,682	No Files
25	Interconnector ATC	12/05/2009 09:59:54	14/05/2009	48	19,507	No Files
26	Four Day Rolling Load Forecast and Assumptions	12/05/2009 09:30:06	13/05/2009	372	126,873	No Files
27	Trading Day Exchange Rate	12/05/2009 08:00:07	13/05/2009	2	1,435	No Files
28	Two Day Rolling Wind Forecast	12/05/2009 00:10:05	12/05/2009	192	66,050	No Files
29	Ex-Post Indicative Shadow Prices	12/05/2009 15:15:44	11/05/2009	96	30,281	No Files
30	Ex-Post Initial Shadow Prices	Unknown	Unknown	0	0	Error

Refresh Iconify Cancel Load XML to Database Collect & Load

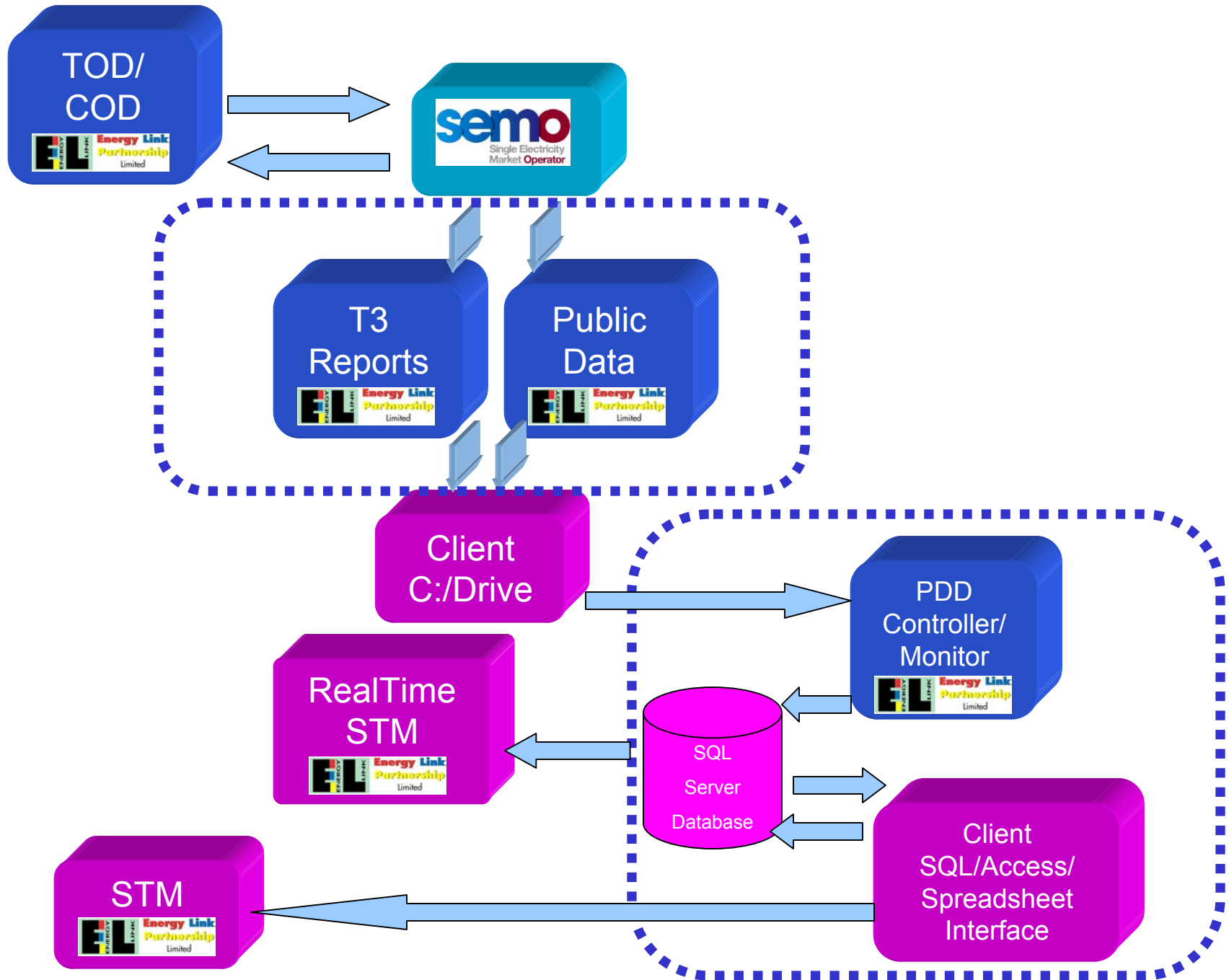
The Energy-Link Partnership.

Collecting Ex-Post Initial Market Schedule Quantity 00:02:49 Online

# Data Collection Summary

- Market Participant Data using digital certificate (“MPI”)
  - Automated collection
- Public Data using FTP transfer
  - Automated collection
- File publication monitored against published settlement calendar
  - Data integrity
  - Simple colour coding for publication status





# SEM Data Storage - PDD

# Data Collection Monitoring

Sett/Trade Date	EN_PIR_P	EN_PIR_F1	EN_PIR_F2	EN_PIR_F3
09/07/2010	Missing	Missing	Not Due	Not Due
10/07/2010	Missing	Missing	Not Due	Not Due
11/07/2010	Missing	Missing	Not Due	Not Due
12/07/2010	Missing	Missing	Not Due	Not Due
13/07/2010	Missing	Not Due	Not Due	Not Due
14/07/2010	Missing	Not Due	Not Due	Not Due
15/07/2010	Missing	Not Due	Not Due	Not Due
16/07/2010	Missing	Not Due	Not Due	Not Due
17/07/2010	Missing	Not Due	Not Due	Not Due
18/07/2010	Missing	Not Due	Not Due	Not Due

- Monitors flows against user selected lags to settlement calendar

# PDD

- Runs as a service
  - Timed monitoring of data “dropzones”
- Any public CSV/XML SEM data can be collected
- Majority of XML/Key CSVs loaded to database
- Additional files added as required (by User)
- File Processing
  - Loaded only once, duplicate and corrupt files handled
  - Transaction logs and back ups
  - Original files stored in compressed form

# PDD

- Stores loaded file revisions
  - Track differences and audit trail
  - Identical files ignored
- Data loaded to a secure SQL database
  - Open database structure means a variety of data query options exist
- Database structure includes linking tables, conversion functions and other procedures to leverage data usage

# Data Queries

- User choice on data query interfaces
  - Microsoft SQL/Access
  - Spreadsheets – macro driven
  - Third party, e.g. Crystal Reports
- Bespoke user interface
  - Energy-Link can provide browser based interface
- Indexing between GU identifiers and old generator codes to facilitate direct SQL queries to be used e.g.
  - Select \* from MSQ

Microsoft SQL Server Management Studio Express

File Edit View Query Tools Window Community Help

New Query | Lingo | Execute

127.0.0.1\... \MSQ Sorted.sql View - dbo.ScenarioList Summary

```
SELECT * FROM MSQ
ORDER BY RunDate ASC, Time ASC ;
```

Results Messages

ID	Scenario_ID	RunDate	Time	AD1	AP5	AT1	AT2	AT4	B10	B31	B32	BGT1	BGT2	BOC4	BOC5	BOC6	C30	CGT8	DB1	ED1	GI1	GI2	GI3	HN2	HNC	KCA	
1	3121	2	2009-06-26 00:00:00.000	1.00	258.00	0.00	0.00	0.00	59.50	91.00	237.00	236.00	0.00	0.00	0.00	0.00	404.00	0.00	385.00	0.00	0.00	0.00	0.00	0.00	333.00	0.00	
2	3122	2	2009-06-26 00:00:00.000	2.00	258.00	0.00	0.00	0.00	40.00	91.00	237.00	236.00	0.00	0.00	0.00	40.00	0.00	404.00	0.00	385.00	0.00	0.00	0.00	0.00	0.00	333.00	0.00
3	3123	2	2009-06-26 00:00:00.000	3.00	258.00	0.00	0.00	0.00	40.00	91.00	237.00	236.00	0.00	0.00	0.00	40.00	0.00	404.00	0.00	385.00	0.00	0.00	0.00	0.00	0.00	333.00	0.00
4	3124	2	2009-06-26 00:00:00.000	4.00	258.00	0.00	0.00	0.00	40.00	91.00	237.00	236.00	0.00	0.00	0.00	40.00	0.00	404.00	0.00	385.00	0.00	0.00	0.00	0.00	0.00	333.00	0.00
5	3125	2	2009-06-26 00:00:00.000	5.00	258.00	0.00	0.00	0.00	40.00	91.00	237.00	236.00	0.00	0.00	0.00	40.00	0.00	404.00	0.00	385.00	0.00	0.00	0.00	0.00	0.00	333.00	176.00
6	3126	2	2009-06-26 00:00:00.000	6.00	258.00	0.00	0.00	0.00	40.00	91.00	237.00	236.00	0.00	0.00	0.00	40.00	0.00	404.00	0.00	385.00	0.00	0.00	0.00	0.00	0.00	333.00	176.00
7	3127	2	2009-06-26 00:00:00.000	7.00	258.00	0.00	0.00	0.00	40.00	91.00	237.00	236.00	0.00	0.00	0.00	40.00	0.00	404.00	0.00	385.00	0.00	0.00	0.00	0.00	0.00	333.00	200.00
8	3128	2	2009-06-26 00:00:00.000	8.00	258.00	0.00	0.00	0.00	40.00	91.00	237.00	236.00	0.00	0.00	0.00	40.00	0.00	404.00	0.00	385.00	0.00	0.00	0.00	0.00	0.00	333.00	200.00
9	3129	2	2009-06-26 00:00:00.000	9.00	258.00	0.00	0.00	0.00	40.00	91.00	237.00	236.00	0.00	0.00	0.00	40.00	0.00	404.00	0.00	385.00	0.00	0.00	0.00	0.00	0.00	333.00	200.00
10	3130	2	2009-06-26 00:00:00.000	1.00	258.00	0.00	0.00	0.00	40.00	91.00	237.00	236.00	0.00	0.00	0.00	40.00	0.00	404.00	0.00	385.00	0.00	0.00	0.00	0.00	0.00	333.00	200.00
11	3131	2	2009-06-26 00:00:00.000	1.00	258.00	0.00	0.00	0.00	40.00	91.00	237.00	236.00	0.00	0.00	0.00	40.00	0.00	404.00	0.00	385.00	0.00	0.00	0.00	0.00	0.00	333.00	200.00
12	3132	2	2009-06-26 00:00:00.000	1.00	258.00	0.00	0.00	0.00	40.00	91.00	237.00	236.00	0.00	0.00	0.00	40.00	0.00	404.00	0.00	385.00	0.00	0.00	0.00	0.00	0.00	333.00	200.00
13	3133	2	2009-06-26 00:00:00.000	1.00	258.00	0.00	0.00	0.00	40.00	91.00	237.00	236.00	0.00	0.00	0.00	40.00	0.00	404.00	0.00	385.00	0.00	0.00	0.00	0.00	0.00	333.00	200.00
14	3134	2	2009-06-26 00:00:00.000	1.00	258.00	0.00	0.00	0.00	40.00	91.00	237.00	236.00	0.00	0.00	0.00	40.00	0.00	404.00	0.00	385.00	0.00	0.00	0.00	0.00	0.00	333.00	200.00
15	3135	2	2009-06-26 00:00:00.000	1.00	258.00	0.00	0.00	0.00	40.00	91.00	237.00	236.00	0.00	0.00	0.00	40.00	0.00	404.00	0.00	385.00	0.00	0.00	0.00	0.00	0.00	333.00	200.00
16	3136	2	2009-06-26 00:00:00.000	1.00	258.00	0.00	0.00	0.00	40.00	91.00	237.00	236.00	0.00	0.00	0.00	40.00	0.00	404.00	0.00	385.00	0.00	0.00	0.00	0.00	0.00	333.00	200.00
17	3137	2	2009-06-26 00:00:00.000	1.00	258.00	0.00	0.00	0.00	40.00	91.00	237.00	236.00	0.00	0.00	0.00	40.00	0.00	404.00	0.00	385.00	0.00	0.00	0.00	0.00	0.00	333.00	200.00
18	3138	2	2009-06-26 00:00:00.000	1.00	258.00	0.00	0.00	0.00	40.00	91.00	237.00	236.00	0.00	0.00	0.00	40.00	0.00	404.00	0.00	385.00	0.00	0.00	0.00	0.00	0.00	333.00	200.00
19	3139	2	2009-06-26 00:00:00.000	1.00	258.00	0.00	0.00	0.00	40.00	91.00	237.00	236.00	0.00	0.00	0.00	40.00	0.00	404.00	0.00	385.00	0.00	0.00	0.00	0.00	0.00	333.00	200.00
20	3140	2	2009-06-26 00:00:00.000	2.00	258.00	0.00	0.00	0.00	40.00	91.00	237.00	236.00	0.00	0.00	0.00	40.00	0.00	404.00	0.00	385.00	0.00	0.00	0.00	0.00	0.00	333.00	200.00
21	3141	2	2009-06-26 00:00:00.000	2.00	258.00	0.00	0.00	0.00	40.00	91.00	237.00	236.00	0.00	0.00	0.00	40.00	0.00	404.00	0.00	385.00	0.00	0.00	0.00	0.00	0.00	333.00	200.00
22	3142	2	2009-06-26 00:00:00.000	2.00	258.00	0.00	0.00	0.00	40.00	91.00	237.00	236.00	0.00	0.00	0.00	40.00	0.00	404.00	0.00	385.00	0.00	0.00	0.00	0.00	0.00	333.00	200.00
23	3143	2	2009-06-26 00:00:00.000	2.00	258.00	0.00	0.00	0.00	40.00	91.00	237.00	236.00	0.00	0.00	0.00	40.00	0.00	404.00	0.00	385.00	0.00	0.00	0.00	0.00	0.00	333.00	200.00
24	3144	2	2009-06-26 00:00:00.000	24.00	258.00	0.00	0.00	0.00	40.00	91.00	237.00	236.00	0.00	0.00	0.00	40.00	0.00	404.00	0.00	385.00	0.00	0.00	0.00	0.00	0.00	333.00	200.00
25	3145	2	2009-06-26 00:00:00.000	25.00	258.00	0.00	0.00	90.00	90.00	91.00	237.00	236.00	0.00	0.00	170.00	170.00	0.00	404.00	0.00	385.00	0.00	0.00	0.00	0.00	0.00	333.00	200.00
26	3146	2	2009-06-26 00:00:00.000	26.00	258.00	0.00	0.00	90.00	90.00	91.00	237.00	236.00	0.00	0.00	170.00	170.00	0.00	404.00	0.00	385.00	0.00	0.00	0.00	0.00	0.00	333.00	200.00
27	3147	2	2009-06-26 00:00:00.000	27.00	258.00	0.00	0.00	90.00	90.00	91.00	237.00	236.00	0.00	0.00	170.00	170.00	0.00	404.00	0.00	385.00	0.00	0.00	0.00	0.00	0.00	333.00	200.00
28	3148	2	2009-06-26 00:00:00.000	28.00	258.00	0.00	0.00	90.00	90.00	91.00	237.00	236.00	0.00	0.00	170.00	0.00	0.00	404.00	0.00	385.00	0.00	0.00	0.00	0.00	0.00	333.00	200.00
29	3149	2	2009-06-26 00:00:00.000	29.00	258.00	0.00	0.00	90.00	0.00	91.00	237.00	236.00	0.00	0.00	170.00	0.00	0.00	404.00	0.00	385.00	0.00	0.00	0.00	0.00	0.00	333.00	200.00
30	3150	2	2009-06-26 00:00:00.000	30.00	258.00	0.00	0.00	0.00	0.00	91.00	237.00	236.00	0.00	0.00	170.00	0.00	0.00	404.00	0.00	385.00	0.00	0.00	0.00	0.00	0.00	333.00	200.00
31	3151	2	2009-06-26 00:00:00.000	31.00	258.00	0.00	0.00	0.00	0.00	91.00	237.00	236.00	0.00	0.00	170.00	0.00	0.00	404.00	0.00	385.00	0.00	0.00	0.00	0.00	0.00	333.00	178.00
32	3152	2	2009-06-26 00:00:00.000	32.00	258.00	0.00	0.00	0.00	0.00	91.00	237.00	236.00	0.00	0.00	170.00	0.00	0.00	404.00	0.00	385.00	0.00	0.00	0.00	0.00	0.00	333.00	176.00
33	3153	2	2009-06-26 00:00:00.000	33.00	258.00	0.00	0.00	0.00	0.00	91.00	237.00	236.00	0.00	0.00	170.00	0.00	0.00	404.00	0.00	385.00	0.00	0.00	0.00	0.00	0.00	333.00	176.00
34	3154	2	2009-06-26 00:00:00.000	34.00	258.00	0.00	0.00	0.00	0.00	91.00	237.00	236.00	0.00	0.00	170.00	0.00	0.00	404.00	0.00	385.00	0.00	0.00	0.00	0.00	0.00	333.00	190.00

Save Results

Save in: Documents and Settings

File name: 260609

Save as type: Report files (\*.rpt)

Query executed successfully.

127.0.0.1\SQLSERVER\SQLSERVER\SQLSERVER (127.0.0.1) | ELP1\Administrator (72) | Lingo | 00:00:09 | 0 rows

Object Explorer

- Connect
- dbo.PUB\_A\_LoadFcst
- dbo.PUB\_D\_ActualLoadSumma
- dbo.PUB\_D\_AggRollingWindFc
- dbo.PUB\_D\_CODInterconnect
- dbo.PUB\_D\_CODStandardGenl
- dbo.PUB\_D\_DispatchInstructio
- dbo.PUB\_D\_EAShadowPrices
- dbo.PUB\_D\_EPInitShadowPrice
- dbo.PUB\_D\_ExAnteIndicativeC
- dbo.PUB\_D\_ExAnteMktSchDet
- dbo.PUB\_D\_ExAnteMktSchSum
- dbo.PUB\_D\_ExchangeRate
- dbo.PUB\_D\_ExPostMktSchDet
- dbo.PUB\_D\_ExPostMktSchSum
- dbo.PUB\_D\_IndicativeMarketP
- dbo.PUB\_D\_InitialExPostMktSc
- dbo.PUB\_D\_InitialExPostMktSc
- dbo.PUB\_D\_InitialMarketPrices
- dbo.PUB\_D\_IntconnATCData
- dbo.PUB\_D\_LoadFcstAssumpti
- dbo.PUB\_D\_LoadFcstSummary
- dbo.PUB\_D\_MarketPriceAvera
- dbo.PUB\_D\_RevIntconnModNc
- dbo.PUB\_D\_RollingWindFcstAs
- dbo.PUB\_D\_RollingWindFcstAs
- dbo.PUB\_D\_SystemFrequency
- dbo.PUB\_D\_TODStandardUnit

```

ExPostInitialExampleQ...y (61)
/***** Script for SelectTopNRows command from SSMS *****/
SELECT TOP 1000000 [ID]
    , [Catalogue_ID]
    , [Datarow]
    , [Trade_Date]
    , [Resource_Name]
    , [Resource_Type]
    , [Delivery_Date]
    , [Delivery_Hour]
    , [Delivery_Interval]
    , [Schedule_Quantity]
FROM [PDD].[dbo].[PUB_D_ExPostMktSchDetail]
Where Resource_Name='GU_400270'
    
```

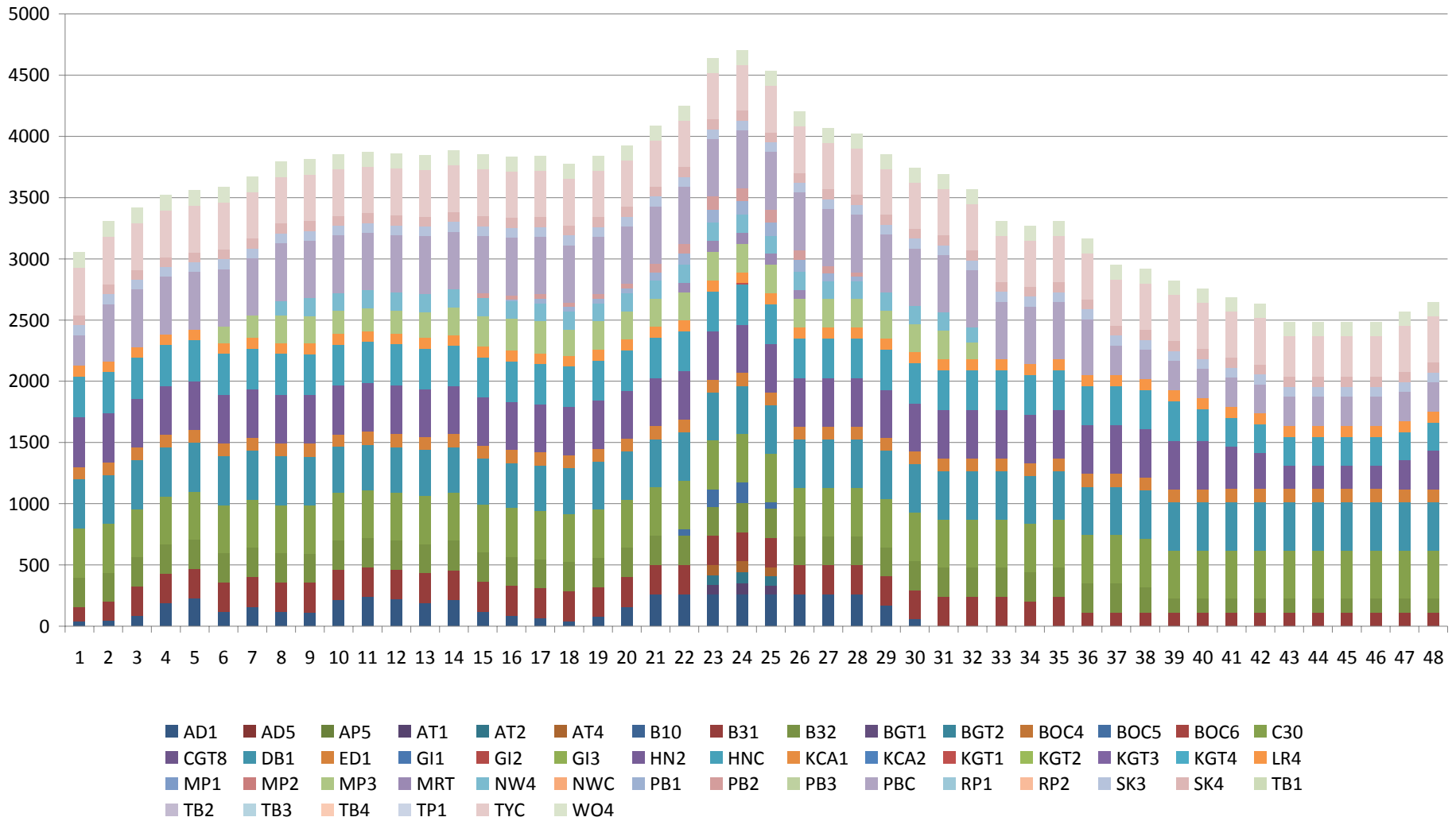
Results Messages

ID	Catalogue_ID	Datarow	Trade_Date	Resource_Name	Resource_Type	Delivery_Date	Delivery_Hour	Delivery_Interval	Schedule_Quantity	
1	1394	7	1393	2010-04-25 00:00:00.000	GU_400270	PPMG	2010-04-26 00:00:00.000	1	1	99.000
2	1395	7	1394	2010-04-25 00:00:00.000	GU_400270	PPMG	2010-04-26 00:00:00.000	1	2	99.000
3	1396	7	1395	2010-04-25 00:00:00.000	GU_400270	PPMG	2010-04-26 00:00:00.000	2	1	99.000
4	1397	7	1396	2010-04-25 00:00:00.000	GU_400270	PPMG	2010-04-26 00:00:00.000	2	2	99.000
5	1398	7	1397	2010-04-25 00:00:00.000	GU_400270	PPMG	2010-04-26 00:00:00.000	3	1	99.000
6	1399	7	1398	2010-04-25 00:00:00.000	GU_400270	PPMG	2010-04-26 00:00:00.000	3	2	99.000
7	1400	7	1399	2010-04-25 00:00:00.000	GU_400270	PPMG	2010-04-26 00:00:00.000	4	1	99.000
8	1401	7	1400	2010-04-25 00:00:00.000	GU_400270	PPMG	2010-04-26 00:00:00.000	4	2	99.000
9	1402	7	1401	2010-04-25 00:00:00.000	GU_400270	PPMG	2010-04-26 00:00:00.000	5	1	99.000
10	1403	7	1402	2010-04-25 00:00:00.000	GU_400270	PPMG	2010-04-26 00:00:00.000	5	2	99.000
11	1404	7	1403	2010-04-25 00:00:00.000	GU_400270	PPMG	2010-04-26 00:00:00.000	6	1	99.000
12	1405	7	1404	2010-04-25 00:00:00.000	GU_400270	PPMG	2010-04-26 00:00:00.000	6	2	99.000
13	1406	7	1405	2010-04-25 00:00:00.000	GU_400270	PPMG	2010-04-25 00:00:00.000	7	1	99.000
14	1407	7	1406	2010-04-25 00:00:00.000	GU_400270	PPMG	2010-04-25 00:00:00.000	7	2	99.000
15	1408	7	1407	2010-04-25 00:00:00.000	GU_400270	PPMG	2010-04-25 00:00:00.000	8	1	99.000
16	1409	7	1408	2010-04-25 00:00:00.000	GU_400270	PPMG	2010-04-25 00:00:00.000	8	2	99.000
17	1410	7	1409	2010-04-25 00:00:00.000	GU_400270	PPMG	2010-04-25 00:00:00.000	9	1	147.947
18	1411	7	1410	2010-04-25 00:00:00.000	GU_400270	PPMG	2010-04-25 00:00:00.000	9	2	149.284

Query executed successfully. PDD 00:00:00 21696 rows



## Aggregated MSQ by Generator Unit for 2009-11-11



# Data Queries and STM

- Data queries available which collect the raw information for STM runs
  - Backcast data
  - Real Time STM forecast data based on most recent published actual and forecast data
- PDD and STM have been designed together to integrate to minimise manual data processing